

# **MODERN PLANETS AND WARS, UPRISINGS, REVOLUTIONS AND VIOLENCE**

**Jagdish Maheshri**

## **ABSTRACT**

The article explores possible correlations between the major world events such as wars, uprising, revolutions and violence, and the corresponding longitudinal ninefold positions of outer planets beyond Mars (Jupiter, Saturn, Uranus, Neptune, Pluto, and North lunar node, Rahu) when those events occurred. The research began with observing the planetary angle pairs for over ninety major world events. By employing a ninefold planetary data, the author found that the world events correlated well with the planetary angles that involved Pluto, Uranus, Neptune and Saturn.

## **Introduction**

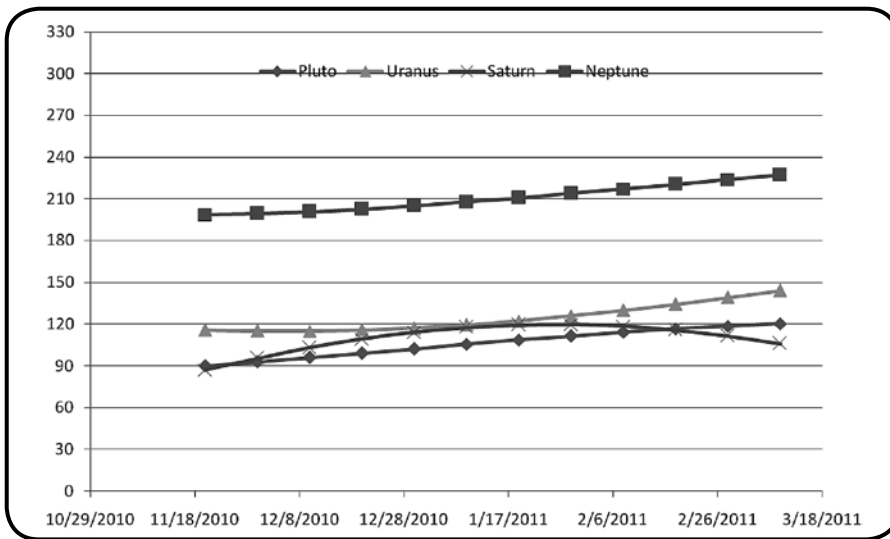
The year 2011 began with uprisings in Tunisia, Egypt, and then Yemen, Bahrain, Libya, Jordan and Syria. As an astrologer, I then set out to explain these events or revolutions in general with research work. Since uprisings or revolutions do not occur as frequently as once a year, I immediately ruled out the influence of faster moving planets: Moon, Mercury, Venus and Sun - as they cycle around the zodiac for a period ranging from a month to year. However, the faster moving planets provide insight in narrowing down the periods once the slow moving planets identify the possible periods in time during which the probability of the occurrence of revolutions are higher. My immediate reaction was to look at the planetary positions of the outer planets corresponding to the timing of the series of events that occurred in the months after December of 2010. Since the outer planets (Jupiter and beyond) orbit around the Sun slowly, at first, I did not see any meaningful correlation. However, by employing the ninefold longitudinal position for the outer planets, a striking correlation between the planetary positions and the corresponding events became apparent. The description of the ninefold concept and the details of ninefold planetary position calculations are provided in the next section.

The graph of the sidereal ninefold position of the outer planets Pluto, Neptune, Uranus and Saturn from November 15, 2010 through March 2011 is shown in Figure 1. Incidentally, the tropical zodiac based planetary positions would also yield the identical results since the research is based on the relative positions of the planets with each other expressed in terms of angles or ninefold longitudinal differences between respective planet pairs.

For this work, conjunctions, semi-sextiles, sextiles, squares, trines, quincunxes and oppositions are not aspects but referred here as angles, synonymous with 0, 30, 60, 90, 120, 150 and 180 degree angles respectively. Notice that by the first week of December 2010, the sidereal ninefold longitudinal position of Pluto, Uranus and Saturn converge and thus form the conjunction, and the conjunction continued until February 19, 2011. At the same time the Planet Neptune formed a square with these planets during the same time period. The uprising in Tunisia began by mid December 2010 when a Tunisian set himself on fire, and by January 14 the President fled the country. The Egyptian revolution began by January 15 and by February 11, 2011 Hosni Mubarak stepped down and people of Egypt got their first democratic freedom. Uprisings in Yemen and Bahrain began in early February and the one in Libya by February 20, 2011, the date by which the ninefold conjunction of Pluto, Uranus and Saturn was over. And as of this writing the Libyan dictator is still in power.

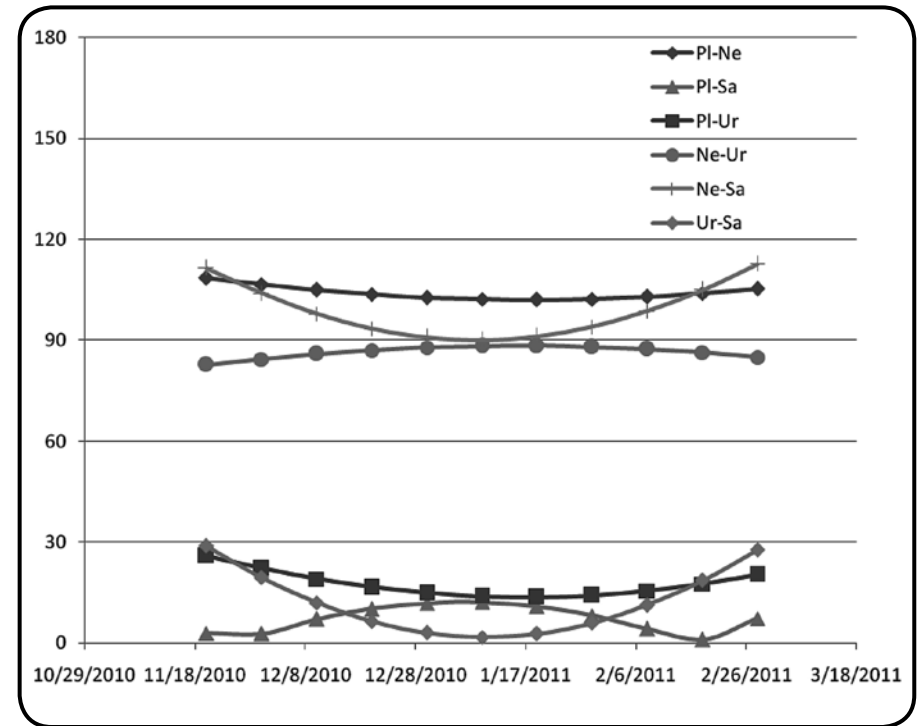
with in less than 30 degrees of their ninefold positions during the entire month of January and first fifteen days of February. However, as will be shown and discussed later, the analysis and subsequent correlations will be limited to the influence of the modern planets (Pluto, Neptune and Uranus) along with Saturn for the world political events.

Figure 1



In Figure 2, the differences of the ninefold planetary position for six planetary pairs are shown for the planets Pluto, Neptune, Uranus and Saturn to clearly illustrate the conjunctions of Saturn, Uranus and Pluto and squares of Neptune with the Saturn, Uranus and Pluto. It is clear that by the end of February, as the ninefold longitudinal difference between the Uranus and Saturn's position increase, the conjunction no longer holds. By that time the momentum of uprisings in Libya, Bahrain, Yemen and Jordan had started fading. Although not shown in both of these figures, the ninefold positions of Jupiter and the North lunar node Rahu form the conjunctions with Saturn, Uranus and Pluto, thus five planets coming together

Figure 2



Inspired by striking ninefold conjunctions of Pluto, Uranus and Saturn and their squares with Neptune during the period of uprising and revolution in Tunisia and Egypt, the analyses were carried out for similar events that occurred since the beginning of the twentieth century, and I examined possible correlations between the longitudinal positions of slow moving planets Pluto, Neptune, Uranus and Saturn and important world events.

### The Ninefold Concept

The concept of a ninefold<sup>1,2,3</sup> planetary position has its origin in the ninefold natal chart<sup>3</sup> in Vedic astrology. In essence, a ninefold natal chart provides a microscopic view of the natal chart. For analyzing the events that occur infrequently and are

likely to be influenced by the modern planets like Pluto, Neptune and Uranus; along with Saturn, Jupiter and the North lunar node, Rahu, the longitudinal planetary positions generally do not yield satisfactory correlations. When the corresponding ninefold planetary positions are employed, it seems that major world events correlate well with the corresponding ninefold planetary positions.

The ninefold position of a planet can be calculated in two ways. In the first, convert a planetary position onto a  $0^\circ$  to  $360^\circ$  zodiac scale. Thus, for instance, a planet positioned at  $11^\circ$  Libra will have the corresponding position at  $191^\circ$  on the same zodiac. Now multiply that degree by the number 9, and if the value exceeds  $360^\circ$ , subtract  $360^\circ$  or a multiple of  $360^\circ$  from the value until it reduces to a number that lies between  $0^\circ$  and  $360^\circ$ . Thus,  $191 \times 9 = 1719$ , and successively subtracting  $360$  from this number,  $1719$  reduces to  $279$ . Therefore, the ninefold position of a planet with  $11^\circ$  Libra is  $9^\circ$  Capricorn.

Alternately, after converting a planetary position on a zero to the  $360^\circ$  zodiac scale as before, which is  $191^\circ$ , subtract  $40^\circ$  or a multiple of  $40^\circ$  from  $191$  until it reduces to a number that lies between  $0$  and  $40^\circ$ . Thus,  $191$  minus  $160$  equal  $31$ . Now multiplying  $31$  by  $9$  yields  $279^\circ$ , and converting it back to the corresponding zodiac sign it yields  $9^\circ$  Capricorn.

### Analysis

The Table-1 lists 52 major world events<sup>4</sup> that deal with revolutions, uprising and wars along with the corresponding ninefold angles among Pluto, Neptune, Uranus and Saturn. Since the analyses only consider four planets, there are six pairs of angles (Pluto-Neptune, Pluto-Uranus, Pluto-Saturn, Neptune-Uranus, Neptune-Saturn and Uranus-Saturn). A  $15^\circ$  orb is used so that if the angle lies between  $0^\circ$  and  $15^\circ$ , it's a conjunction, if it lies between  $15^\circ$  and  $45^\circ$  it's a semi-sextile, and so on up to the opposition where the angle lies between  $165^\circ$  and  $180^\circ$ . Please note that one degree of regular planetary position expands to nine degrees in the ninefold position.

The first four columns in Table-1 list the event number, date, country and the event description respectively. The fifth column lists the number of angles that form either conjunctions, oppositions, quincunxes and/or squares among the planets: Pluto, Neptune, Uranus and Saturn. Thus, for Hitler's invasion Poland (September 1, 1939), listed as the first entry in Table-1, there were three ninefold squares: Pluto-Neptune, Pluto-Uranus and Pluto-Saturn; two ninefold oppositions: Neptune-Saturn and Uranus-Saturn; and one conjunction: Neptune-Uranus. The last column lists the specific angle pairs for each event. Out of these 52 listed events, there are five events where all six planetary pairs form angles that were either conjunctions,

squares, quincunxes or oppositions; there were four events where five planetary pairs formed the similar angles; fifteen events for which four pairs, twenty one events for which three pairs, and seven events for which two pairs formed the similar angles.

In addition, for all the 52 events, out of six possible angles, there were at least either two pairs of double angles (for example, for event 48, and there were two pairs, Pluto-Neptune and Pluto-Saturn formed ninefold quincunxes; and the other two pairs, Neptune-Saturn and Uranus-Saturn formed semi-sextiles), or three pairs of one triple angle (for instance, three pairs: Pluto-Neptune, Pluto-Uranus and Pluto-Saturn form ninefold squares for Hitler's invasion of Poland). Thus for this analysis, the events chosen simultaneously meet two criteria. The first, there were at least two pairs of angles, and the each pair of angles either conjunct, square, quincunx or oppose with each other; and the second criterion is out of six possible angles there are at least two double pairs or at least one triple pair angle.

It is important to note that the predominant influence of Pluto is clearly evident for events that dealt with war, successful uprising and violence causing a large number of human casualties. Thus, the first five events listed in Table-1 dealt with war and successful revolution through uprising by people. For these five events all six possible angle pairs were formed, with each pair being either in conjunction, square, quincunx or opposition with Pluto being the dominant planet. The next four events dealt with war and violence with five angle pairs with the similar angles. The following fifteen events, where four pairs out of six pairs formed the similar angles, all the events still dealt with war, violence or terrorism. But for subsequent events (the next twenty one events where three pairs out of six, the last seven events where only two pairs out of six formed the similar angles) the violence and terrorism seem to have diminished, especially for the last seven events.

Based on the this research which is limited only to the four outermost planets, the next future event that might deal with uprising, war, revolution, violence or unrest may occur during July-August 2014 when the ninefold angles for three pairs (Pl-Ur, Pl-Ne, Pl-Sa) will come close to  $135$  degree, two pairs (Ne-Sa, and Ur-Sa) form  $90$  degree, and the Ne-Ur form zero degree angle.

Date	Country	Event	No. Angles	Angles	
1	9/1/39	Germany	Germany invades Poland	6	90:Pi-Ne, Pi-Ur, Pi-Sa; 180:Ne-Sa, Ur-Sa; 0:Ne-Ur
2	11/6/50	Korea	Chinese enter the Korean war	6	0:Pi-Ur, Pi-Sa, Ur-Sa; 180:Ne-Ur, Ne-Sa; 150:Pi-Ne
3	7/8/59	Vietnam	First US soldiers killed in Vietnam	6	150:Pi-Ne, Pi-Ur, Ur-Sa; 0:Pi-Sa, Ne-Ur; 180:Ne-Sa
4	12/27, 10 - 1/27, 11	Tunisia	Uprising and ousting of President Zine-el abidine	6	90:Pi-Ne, Ne-Ur, Ne-Sa; 0:Pi-Ur, Ur-Sa, Pi-Sa
5	1/25 - 2/11, 2011	Egypt	Uprising and ousting of Hosni Mubarak	6	90:Pi-Ne, Ne-Ur, Ne-Sa; 0:Pi-Ur, Ur-Sa, Pi-Sa
6	6/4/89	China	As many as 2000 protesters die in the Tiananmen Massacre	5	180:Pi-Ne, Pi-Sa; 90:Pi-Ur, Ur-Sa; 0:Ne-Sa
7	1/22/05	Russia	Tsar Nicholas orders Russian troops to fire on demonstrators	5	150:Pi-Ne, Ne-Ur, Ne-Sa; 90:Ur-Sa; 0:Pi-Sa
8	8/15/47	India	India's independence and bloody partition riots	5	150:Pi-Ne, Ne-Ur, Ne-Sa; 90:Ur-Sa; 0:Pi-Sa
9	8/25/50	South Korea	South Korea is invaded by North Korean troops	5	180:Ne-Ur; 150:Pi-Ne; 90:Ne-Sa, Ur-Sa; 0:Pi-Ur
10	3/5/46	Soviet Union	Iron Curtain was descended	4	60:Ne-Ur, Ur-Sa; 150:Pi-Ne, Pi-Ur, Pi-Sa; 0:Ne-Sa
11	6/5/67	Middle-East	Six Day War-Israeli attacks air bases of Egypt, Syria and Jordan and sieze Sinai	4	150:Pi-Ne, Ne-Ur, Ne-Sa; 30:Pi-Ur, Pi-Sa; 0:Ur-Sa
12	7/31/14	Central Europe	Outbreak of World War I	4	150:Pi-Ur, Ur-Sa; 90:Ne-Ur, Ne-Sa
13	12/25/26	Japan	Hirohito becomes emperor of Japan	4	90:Pi-Ur, Ne-Ur; 150:Pi-Sa, Ne-Sa
14	Sep-30	Germany	Hitler's socialist party becomes the second most powerful party	4	30:Pi-Ne, Pi-Sa; 180:Ne-Ur, Ur-Sa; 150:Pi-Ur; 0:Ne-Sa
15	2/27/33	Germany	Hitler uses the Reichstag Fire to take emergency powers.	4	60:Pi-Ne, Ne-Sa; 90:Pi-Ur, Ur-Sa; 0:Pi-Sa; 150:Ne-Ur
16	3/10/33	Germany	Nazi Germany establish their first concentration camp	4	60:Pi-Ne, Ne-Sa; 90:Pi-Ur, Ur-Sa; 0:Pi-Sa; 150:Ne-Ur
17	9/15/35	Germany	The Nazi government enacts the Nuremberg laws	4	90:Ne-Ur, Ne-Sa; 180:Pi-Sa, Ur-Sa
18	11/29/47	Palestine	Calls for the partition of British ruled Palestine into Jewish and Arab states.	4	90:Pi-Ur, Ne-Sa; 150:Pi-Ne, Ur-Sa
19	5/23/49	Germany	Postwar Division of Germany becomes formalized.	4	150:Pi-Sa, Ne-Ur; 180:Pi-Ne, Ur-Sa
20	8/15/48	Korea	Korea is divided into North and the South Korea	4	60:Pi-Ur, Ne-Sa; 150:Pi-Ne, Pi-Ur; 90:Pi-Sa
21	4/17/61	USA-Cuba	CIA trained cuban exiles were captured by Castro's forces at Bay of Pigs	4	150:Pi-Ne, Pi-Sa; 0:Ne-Ur, Ne-Sa
22	3/28/79	USA	Three Mile Island nuclear plant released the dangerous radioactive gas into air	4	150:Pi-Ne, Ne-Sa; 60:Pi-Ur, Ur-Sa; 0:Pi-Sa; 90:Ne-Ur
23	9/11/01	USA	Al Queda terrorist destroyed twin towers in NYC	4	150:Pi-Sa, Ne-Ur; 90:Pi-Ur, Ne-Sa
24	3/19/03	Iraq	US invades Iraq	4	150:Pi-Sa, Ne-Ur; 90:Pi-Ur, Ne-Sa

Date	Country	Event	No. Angles	Angles	
25	6/14/40	France/Germany	German troops enter Paris	3	0:Pi-Sa, Ne-Ur; 120:Pi-Ur, Ne-Sa, Ur-Sa; 90:Pi-Ne
26	Sept-Nov 1940	Britain	Germans bomb London	3	0:Pi-Sa, Ne-Ur; 120:Pi-Ne, Ne-Sa, Ur-Sa; 90:Pi-Ur
27	2/25/13	USA	Sixteen Amendment makes income tax legal.	3	150:Pi-Ur, Ne-Sa; 60:Ne-Ur, Ur-Sa; 90:Pi-Sa
28	10/29/29	USA	Black Tuesday. Collapse of Stock Market and the Great Depression begins	3	30:Pi-Ne, Pi-Sa; 180:Pi-Ur, Ur-Sa; 150:Ne-Ur
29	9/19/31	Japan	Japanese troops seize the province of Manchuria	3	90:Ne-Sa, Ur-Sa; 120:Pi-Ur, Pi-Sa; 150:Ne-Ur
30	11/8/32	USA	Roosevelt wins the 1932 election	3	120:Pi-Ur, Pi-Sa; 180:Ne-Ur, Ne-Sa; 0:Ur-Sa
31	6/16/33	USA	FDIC was established	3	60:Pi-Ne, Pi-Ur; 90:Ne-Ur, Ur-Sa; 0:Ne-Sa
32	8/14/35	USA	Social Security Act was established	3	60:Pi-Ne, Ne-Ur; 150:Pi-Sa, Ur-Sa; 0:Pi-Ur
33	April-June 1945	USA	United Nations Charter was born.	3	60:Ne-Ur, Ne-Sa; 150:Pi-Ne, Pi-Ur; 90:Pi-Sa
34	4/30/45	Germany	Hitler kills himself	3	60:Ne-Ur, Ne-Sa; 150:Pi-Ne, Pi-Ur; 90:Pi-Sa
35	6/26/48	Germany	Berlin is divided into an eastern zone controlled by	3	60:Pi-Ur, Pi-Sa; 150:Pi-Ne, Ne-Ur; 90:Ne-Sa
36	3/6/57	Ghana	Ghana got its independence from British, the first country in Africa to do so.	3	90:Ne-Ur, Ur-Sa; 120:Pi-Ur, Pi-Sa; 150:Pi-Ne
37	7/2/64	USA	President Johnson signs the Civil Right Act of 1964	3	120:Pi-Sa, Ne-Ur; 150:Pi-Ne, Ur-Sa; 90:Ne-Sa
38	3/8/65	USA/Vietnam	2 battalions of Marines become the first US combat troops in the Vietnam	3	120:Pi-Sa, Ne-Ur; 150:Pi-Ne, Ur-Sa; 90:Ne-Sa
39	8/26/68	Chicago	1000 people travel to the DNC to protest Vietnam War resulting into riots	3	150:Pi-Ne, Ne-Ur; 60:Pi-Ur, Ur-Sa; 90:Ne-Sa
40	6/17/72	USA	Watergate break-in	3	90:Ne-Ur, Ne-Sa; 120:Pi-Ur, Pi-Sa; 150:Pi-Ne
41	9/5/72	Munich, Germany	Arab Terrorists (Munich Olympic) killed two coaches and tok nine hostage.	3	180:Pi-Ne, Pi-Sa; 30:Ne-Sa, Ur-Sa; 150:Pi-Ur
42	4/30/75	Vietnam	North Vietnamese troops surround Saigon and South Vietnam surrenders	3	150:Pi-Ne, Pi-Ur; 120:Ne-Sa, Ur-Sa; 0:Ne-Ur
43	2/7/90	Soviet Union	Communist Party ends its monopoly on political power	3	150:Pi-Ne, Pi-Sa; 60:Ne-Ur, Ne-Sa; 90:Pi-Ur
44	2/11/90	South Africa	Nelson Mandela was freed from jail after 27 years as a political prisoner.	3	150:Pi-Ne, Pi-Sa; 60:Ne-Ur, Ne-Sa; 90:Pi-Ur
45	Feb, 20 2011	Libya	Uprising	3	90:Pi-Ne, Ne-Ur; 30:Pi-Ur, Ur-Sa; 0:Pi-Sa
46	10/31/22	Italy	Mussolini becomes Europe's first fascist head of state	2	30:Pi-Ne, Ne-Ur; 120:Pi-Sa, Ur-Sa; 150:Ne-Sa; 0:Pi-Ur
47	11/1/22	Turkey	Turkish reformer Mustafa Kemal ends the 700 year old Ottoman Empire	2	30:Pi-Ne, Ne-Ur; 120:Pi-Sa, Ur-Sa; 150:Ne-Sa; 0:Pi-Ur
48	8/12/72	Vietnam	Last US Combat troops leave Vietnam	2	150:Pi-Ne, Pi-Sa; 30:Ne-Sa, Ur-Sa
49	8/2/90	Kuwait	Saddam Hussein of Iraq invades Kuwait	2	120:Pi-Sa, Ur-Sa; 60:Ne-Ur, Ne-Sa; 90:Pi-Ur; 150:Pi-Ne
50	11/6/17	Russia	Lenin leads the "October Revolution" by calling for "Peace, Bread and Land"	2	60:Pi-Ne, Ne-Ur, Ne-Sa; 150:Pi-Ne; 0:Pi-Sa
51	5/4/70	USA	National Guardsmen fire on student demonstrators at Kent State Univ in Ohio	2	120:Pi-Ne, Pi-Sa, Ne-Ur; 90:Pi-Ur; 150:Ur-Sa
52	11/9/89	Germany	Berlin wall was tear down	2	60:Pi-Ur, Ne-Ur, Ur-Sa; 150:Pi-Ne; 0:Ne-Sa

### Assumptions

The analysis is based on the following assumptions:

1. The influence of Moon, Sun, Venus, Mercury, Mars and Jupiter is not included. Since the Moon, Sun, and the inner planets Mercury and Venus, cycle around the zodiac for a period ranging from a month to a year and further the focus of the analysis was to predominantly study the influence of the modern planets, only the influence of Pluto, Neptune, Uranus and Saturn is included. However, the faster moving planets may provide insight in narrowing down the periods once the slow moving planets identify the possible periods in time during which the probability of the occurrence of revolutions are higher.
2. As highlighted earlier, instead of the regular longitudinal planetary positions, the ninefold longitudinal planetary positions were employed.
3. Although the sidereal planetary positions were used for the analyses, the tropical zodiac based planetary positions would also yield the identical results since the research is based on the relative positions of the planets with each other expressed in terms of angles or differences between the planets longitudinal positions. In other words, regardless of the zodiac employed the results remain unaffected.
4. For ninefold planetary positions, a fifteen degree orb is used so that if the angle lies between  $0^\circ$  and  $15^\circ$ , it's a conjunction, if it lies between  $15^\circ$  and  $45^\circ$  it's a semi-sextile, and so on up to the opposition where the angle lies between  $165^\circ$  and  $180^\circ$ . Please note that one degree of regular planetary position expands to nine degrees in the ninefold position.

### Summary and Conclusion

It must be noted that, for the purpose of studying the influence of the modern planets, the analysis presented here is limited to the influence of only four planets: Pluto, Neptune, Uranus and Saturn. In addition to the modern planets (Pluto, Neptune and Uranus), Saturn was included because it became clear that for events that deal with war, uprising, social unrest or revolution, Saturn seems to play as much role as the modern planets do. However, further research is warranted that should include at least the influence of the lunar nodes (North and South nodes, or Rahu and Ketu as referred in Vedic astrology) and Jupiter. Although not included in this article, the September 11, 2001 Al-Queda attack on twin towers (event number 23 in Table 1) clearly reflects the strong influence of Rahu and Ketu as one forms ninefold conjunction with planet Pluto and the other forms the ninefold opposition to planet Pluto. In addition, Uranus and lunar nodes form the ninefold squares.

Among the angles, it was important to note that the presence of ninefold conjunctions, oppositions, quincunxes and/or squares was crucial for materializing an event that dealt with revolution, war, uprising or social unrest. And intuitively (or astrologically) generally quincunxes, conjunctions, squares and oppositions among the planets like Pluto, Uranus, Neptune and Saturn are considered to be responsible for challenges, difficulties, and drastic change (transformation) resulting in death of existing situation and the beginning of a new.

### Bibliography

1. Bruhat Jatak, Sage Varahmihir (530 CE) and Bruhat Parashari, Sage Parashar (sometimes before 400CE)
2. Maheshri, J.C., *It's All in Timing*, Baltimore, MD: Noble House, 1997
3. J. Maheshri, *The Importance of the Ninefold Chart in Vedic Prediction*, Geocosmic Journal, NCGR, Summer 2008
4. David Rubel, *The United States in the 20th Century*, An Agincourt Press Book, 1995

### Biography

**Jagdish Maheshri** is a Research Director of NCGR. He presented his research paper, "Earthquake Prediction Model," at the Baltimore NCGR conference. He holds a PhD in chemical engineering; practices, teaches, and conducts workshops in Vedic astrology; appears on radio; and hosts his website. He discovered a unique Ninefold Progression technique and explains the technique and its application in his book, *It's All in Timing*. His article, "The Importance of the Ninefold Chart in Vedic Prediction," appeared in the 2008 NCGR Journal. He can be reached at [jmaheshri@astroinsight.com](mailto:jmaheshri@astroinsight.com) or [researchdirector@geocosmic.org](mailto:researchdirector@geocosmic.org).

